

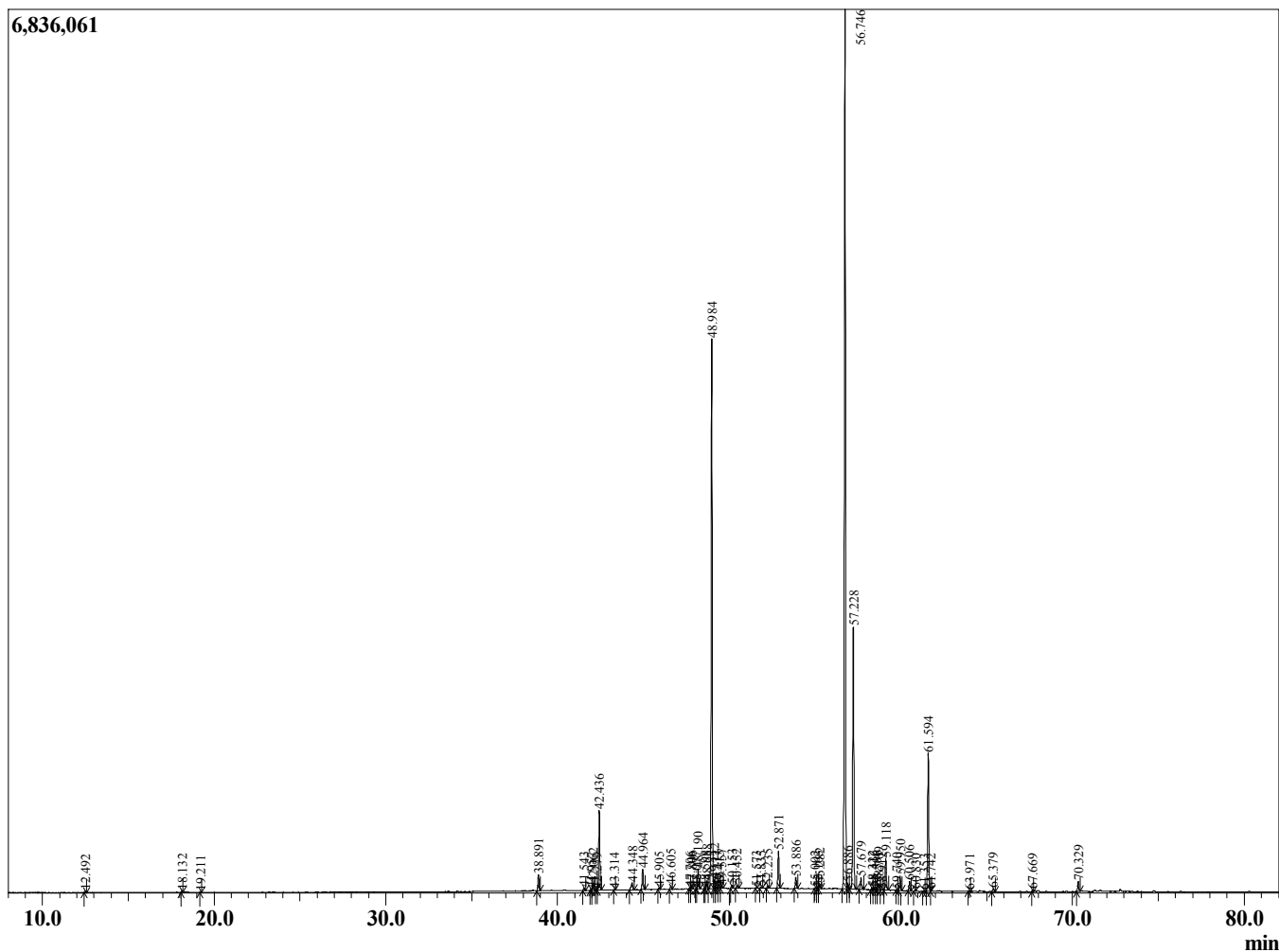
Sample Information

Sample Type : Essential Oil  
 Sample Name : Commiphora myrrha

Myrrh  
 Lot# ETK16-KT  
 Country: Ethiopia



Chromatogram Commiphora myrrha



R.Time	Name	Area%
12.492	alpha-Pinene	0.04
18.132	Limonene	0.05
19.211	trans-beta-Ocimene	0.02
38.891	delta-Elemene	0.71
41.543	alpha-Copaene	0.10
41.957	Unidentified	0.07
42.062	beta-Bourbonene	0.27
42.279	alpha-Bourbonene	0.02
42.436	beta-Elemene	3.44
43.314	Unidentified	0.02
44.348	beta-Caryophyllene	0.45
44.964	gamma-Elemene	0.95
45.905	Unidentified	0.06
46.605	alpha-Humulene	0.17
47.706	Selina-4,11-diene	0.03
47.806	trans-Cadina-1(6),4-diene	0.06
48.077	alpha-Amorphene	0.02
48.190	Germacrene D	0.94
48.598	Eremophila-1(10),11-diene	0.03
48.688	beta-Selinene	0.36
48.984	Curzerene	24.73
49.112	alpha-Selinene	0.37
49.277	alpha-Murolene	0.06
49.415	alpha-Bulnesene	0.04
49.557	Unidentified	0.13
50.153	gamma-Cadinene	0.15
50.452	delta-Cadinene	0.15
51.573	Eremophilene isomer	0.03
51.835	Selina-3,7(11)-diene	0.06
52.235	Elemol	0.11
52.871	Germacrene B	1.66
53.886	Unidentified	0.51
55.002	Unidentified	0.05
55.163	Unidentified	0.06
55.282	Curzerenone	0.19
56.746	Furanoedesma-1,3-diene	40.22
56.886	Unidentified	0.27
57.228	Lindestrene	12.10
57.679	alpha-Murolol (=Torreyol)	0.56
58.322	Unidentified	0.11
58.416	Unidentified	0.13
58.596	Unidentified	0.14
58.709	Furanoedesma 1,4-diene	0.44
58.912	Unidentified	0.03
59.118	Intermedeol	1.49
59.740	Unidentified	0.02
59.950	2-Methoxyfuranodiene A	0.66
60.506	Germacrone	0.45
60.830	Unidentified	0.03
61.353	Unidentified	0.04
61.594	2-Methoxyfuranodiene B	6.39
61.742	Unidentified	0.04
63.971	Unidentified	0.04
65.379	Unidentified	0.17
67.669	2-Acetoxyfuranodiene isomer	0.09
70.329	2-Acetoxyfuranodiene	0.46

R.Time Name

Area%  
100.00